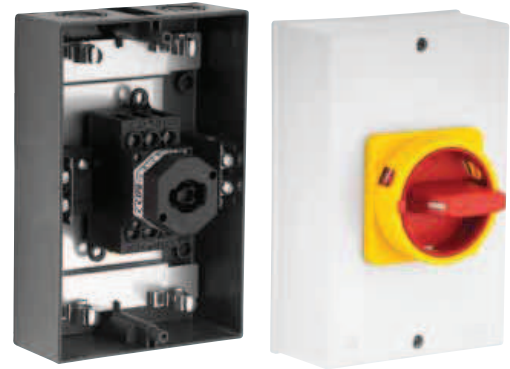


Main/Emergency-Off Switches

- Enclosed switches with insulated enclosure (polycarbonate)
- EMV/EMC application, connection system for the uninterrupted connection of shielded/screened cables consisting of shroud and 4 shroud clamps \varnothing 12–16 mm
- Cover interlock in ON position
- 3 up to 6 pole
- 20 A up to 63 A
- IP66



Switching programme	Rated data (IEC 60947)			Enclosure dimension (H x W x D) (mm)	Padlock device N-handle yellow/red	Padlock device M-handle yellow/red	Padlockable handle V-handle yellow/red
	Operat. current I _e	Operational power (at 380–440 V)					
	AC-21A (A)	AC-23A (kW)	AC-3 (kW)		IP66	IP66	IP66
					Order code number	Order code number	Order code number
41300 – 3 pole – without auxiliary contacts 	20	5.5	3.7	175 x 115 x 100	H216-41300-715N4	H216-41300-715M4	H216-41300-715V4
	25	7.5	5.5	175 x 115 x 100	H220-41300-715N4	H220-41300-715M4	H220-41300-715V4
	32	11	7.5	175 x 115 x 100	H226-41300-715N4	H226-41300-715M4	H226-41300-715V4
	40	15	11	175 x 115 x 100	H233-41300-715N4	H233-41300-715M4	H233-41300-715V4
	40	15	11	175 x 115 x 100	B240-41300-715N4*	B240-41300-715M4*	B240-41300-715V4*
	50	18.5	15	175 x 115 x 100	B250-41300-715N4	B250-41300-715M4	B250-41300-715V4
	63	22	18.5	175 x 115 x 100	B263-41300-715N4	B263-41300-715M4	B263-41300-715V4
41400 – 4 pole – without auxiliary contacts – neutral contact early make/late break 	20	5.5	3.7	175 x 115 x 100	H216-41400-715N4	H216-41400-715M4	H216-41400-715V4
	25	7.5	5.5	175 x 115 x 100	H220-41400-715N4	H220-41400-715M4	H220-41400-715V4
	32	11	7.5	175 x 115 x 100	H226-41400-715N4	H226-41400-715M4	H226-41400-715V4
	40	15	11	175 x 115 x 100	H233-41400-715N4	H233-41400-715M4	H233-41400-715V4
	40	15	11	175 x 115 x 100	B240-41400-715N4*	B240-41400-715M4*	B240-41400-715V4*
	50	18.5	15	175 x 115 x 100	B250-41400-715N4	B250-41400-715M4	B250-41400-715V4
	63	22	18.5	175 x 115 x 100	B263-41400-715N4	B263-41400-715M4	B263-41400-715V4
41600 – 6 pole – without auxiliary contacts 	20	5.5	3.7	175 x 115 x 100	H216-41600-725N4	H216-41600-725M4	H216-41600-725V4
	25	7.5	5.5	175 x 115 x 100	H220-41600-725N4	H220-41600-725M4	H220-41600-725V4
	32	11	7.5	175 x 115 x 100	H226-41600-725N4	H226-41600-725M4	H226-41600-725V4
	40	15	11	175 x 115 x 100	H233-41600-725N4	H233-41600-725M4	H233-41600-725V4

* larger terminal capacity, see page 154
Further switching programmes from page 132.

Dimensions in mm:

Types H216 / H220 / H226 / H233 / B240 / B250 / B263:

Mtg. form	H1	B1	T1	T2	2xM	H2
715M4	175	115	100	38	20/25	165
715N4	175	115	100	33	20/25	165
715V4	175	115	100	39	20/25	165
725M4	175	115	100	38	20/25	165
725N4	175	115	100	33	20/25	165
725V4	175	115	100	39	20/25	165